

# "Apollo"® Press

## "Apollo"® Press copper press

"Apollo"® Press fittings & valves are offered in sizes ranging from ½" through 4" and come equipped with an EPDM Sealing element that has Leak Before Press® functionality to ensure safe and confident connections, minimizing the potential for installation error. "Apollo"® Press products are lead-free, heat and flame free (no hot work permit needed), and can be installed in a variety of applications using the majority of industry accepted press tools. Whether you are starting a new project or performing a repair on a "wet" system, "Apollo"® Press has what you need, making our system the clear and comprehensive choice.

### operating parameters

parameters	EPDM
approved pipe material	<ul style="list-style-type: none"> <li>• ASTM B88</li> <li>• types K, L, M hard copper (½" - 4") or soft drawn annealed (½" - 1 ¼")</li> </ul>
max pressure	300 psi
temperature range	0°F to 250°F
applications	<ul style="list-style-type: none"> <li>• general piping systems</li> <li>• heating and cooling</li> <li>• industrial gas systems</li> <li>• compressed air systems</li> <li>• fire protection systems</li> <li>• process and utility water systems</li> </ul>

### vertical markets

- healthcare
- education
- hospitality
- government
- multifamily
- residential
- data center
- manufacturing
- food & beverage

### applications

service	pressure	temperature	EPDM
hot & cold potable water	300 psi	0°F - 250°F	✓
rainwater / gray water	300 psi	0°F - 250°F	✓
chilled water	300 psi	0°F - 250°F	✓
hydronic heating	300 psi	0°F - 250°F	✓
cooling water	200 psi	32°F - 250°F	✓
low-pressure steam	up to 15 psi	248°F	✓
ethanol	200 psi	32°F - 250°F	✓
compressed air	200 psi	32°F - 250°F	✓
oxygen (non-medical)	140 psi	up to 140°F	✓
nitrogen	200 psi	32°F - 250°F	✓
carbon dioxide	200 psi	32°F - 250°F	✓
argon	200 psi	ambient	✓
hydrogen	125 psi	0°F - 250°F	✓
vacuum	29.2 in Hg	0°F - 160°F	✓

### valves

#### type

- ball valves
- check valves
- strainers
- mixing valves

### approvals & certifications

	EPDM valves	EPDM fittings
approvals & certifications	<ul style="list-style-type: none"> <li>• IAPMO/ANSI/CAN Z1157</li> <li>• CSA TIL-MSE 13</li> <li>• NSF/ANSI 61</li> <li>• NSF/ANSI 372</li> <li>• ICC-ES PMG-1148</li> </ul>	<ul style="list-style-type: none"> <li>• ANSI/IAPMO/CAN Z1117</li> <li>• NSF/ANSI 61</li> <li>• NSF/ANSI 372</li> <li>• CRN</li> <li>• ICC-ES PMG-1148</li> <li>• FM 1920</li> <li>• UL 213</li> </ul>
compliances	<ul style="list-style-type: none"> <li>• ASME B16.51</li> <li>• ICC-ES LC 1002</li> <li>• UPC*</li> <li>• IPC*</li> <li>• IRC*</li> <li>• NSPC*</li> <li>• National Plumbing Code of Canada</li> </ul>	<ul style="list-style-type: none"> <li>• ASME B16.51</li> <li>• ICC-ES LC 1002</li> <li>• UPC*</li> <li>• IPC*</li> <li>• IRC*</li> <li>• NSPC*</li> <li>• National Plumbing Code of Canada</li> </ul>

scan to view  
"Apollo"® Press  
copper press  
submittal package



scan to view  
"Apollo"® Press  
fittings & valves



scan to view  
our policies



# download our submittal package builder follow these instructions or watch our video

1. start by visiting our website at [aalberts-ips.us](http://aalberts-ips.us)
2. in the top right corner, click on the new icon to go to the My List page.
3. navigate to the Product Catalog to begin adding products.
4. when you find a product you'd like to add to your submittal package, select it and add it to My List.
5. after adding all the products you need, click the icon in the top right corner again to view your My List.
6. review your list of added products and click Build Submittal Package.
7. fill out the mandatory fields: Name, Company Name, and Email Address, and optionally fill in the project information fields.
8. click the Email to Me button to receive an email with your custom submittal package.
9. open the email, click Download, and enjoy your custom-created Aalberts integrated piping systems submittal package.

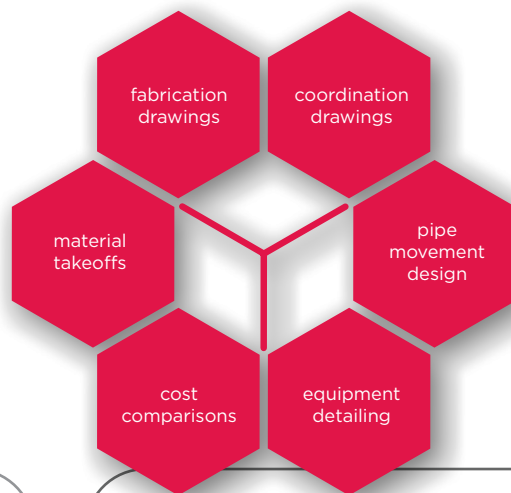
scan to watch instructions



begin building your submittal package now

## facing challenges with your projects?

we have the resources to help



### field service

- field experts that fit your system requirements
- increase installation efficiency and reinforce safe and best practices with on-site training and field support
- trouble shooting assistance beyond project life
- on-time project completion to help you meet budget

**on-site service**



scan to contact our field services team



### Revit plug-in

- design complex piping systems faster with 15,000+ Aalberts IPS products
- structured data based on ETIM-MC standards
- optimized pipe types and routing preferences based on application, approval, and standards
- selection and modeling tools that simplify workflow and increase productivity
- compatible with latest Autodesk Revit versions (2019 through current)



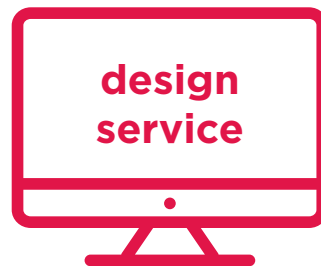
scan to download our Revit plug-in



### design service

- detailed material takeoffs
- competitive cost comparisons
- custom equipment detailing
- 3D coordination drawings
- pipe movement design
- system fabrication drawings
- efficient design-build with Aalberts IPS Revit plug-in

**design service**



scan to view all design service offerings

