



Made In The USA  
Manufactured by Conbraco Industries, Inc.

**DESCRIPTION**

The Apollo Air Gap Drain (AGD) is designed to funnel minor relief valve (RV) discharges due to line pressure fluctuations and/or minor check valve fouling into the drainage system.

Drainage piping is easily attached to the 2" Male NPT threaded portion of the AGD or the 2" Female threaded portion of the elbow. The elbow is supplied to allow the installer to direct any RV discharge down to a properly sized floor drain. Its use is optional.

**NOTES:**

The AGD is designed to hold only its own weight. Additional pipe or the use of fittings requires pipe hangers or other support methods.

The AGD will not collect the full discharge possible from the relief valve should a catastrophic failure occur. An adequately sized floor drain should be used. Consult local codes for drain sizing information.

**AIR GAP DRAIN (AGD)** for installation with:  
Apollo's Reduced Pressure Principle (RP)  
Backflow Preventers

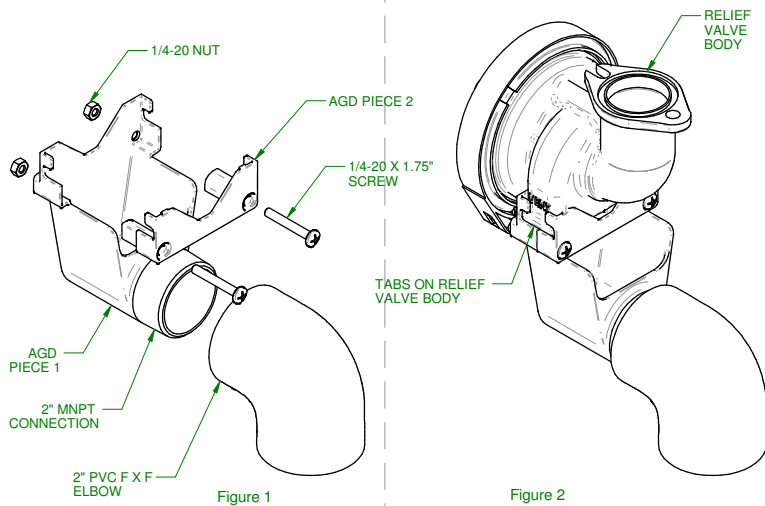
- Model RP4A 2 1/2" - 6"**
- Model RPDA4A 2 1/2" - 6"**
- Model RPDA2 4A 2 1/2" - 6"**

- Model RP4AN 2 1/2" - 6"**
- Model RPDA4AN 2 1/2" - 6"**
- Model RPDA2 4AN 2 1/2" - 6"**

**Air Gap Drain Installation Instructions**

1. Slide AGD PIECE 1 over tabs on "vent" area of the relief valve body (see Figures 1 and 2).
2. Slide AGD PIECE 2 over tabs on opposite side of relief valve body.
3. Attach AGD PIECE 2 to AGD PIECE 1 using (2) 1/4-20 X 1.75" long bolts and (2) 1/4-20 nuts. Nuts may be captured in PIECE 1 for easy of assembly.

**NOTE:** The 2" PVC elbow provided may be installed as shown if the installer wishes to divert the discharged water in another direction. It is not necessary to install this elbow for the AGD to function properly.



Models:  
2 1/2" - 6"  
RP4A  
RPDA4A  
RPDA2 4A

Models:  
2 1/2" - 6"  
RP4AN  
RPDA4AN  
RPDA2 4AN

| SIZE   | A     | B     | C    | D    |
|--------|-------|-------|------|------|
| 2 1/2" | 11.28 | 10.87 | 2.34 | 2.78 |
| 3"     | 11.28 | 10.87 | 2.34 | 2.78 |
| 4"     | 12.02 | 10.51 | 2.34 | 2.78 |
| 6"     | 13.32 | 11.76 | 2.34 | 2.78 |

Shown without shut-off valves for clarity

**CALIFORNIA PROP 65:**  
**WARNING:** Cancer and Reproductive Harm - www.P65Warnings.ca.gov

www.apollovalves.com

I-9259-00 Rev. B