

# 82LF-100-04PR series

3-piece full port, press end bronze ball valve

**lead free**



Apollo Press



job name:	
job location:	
engineer:	
contractor:	
tag:	
PO#:	
rep:	
wholesale dist.:	

## description

The Apollo 82LF Series offers the same rugged features as the standard 82 Series with the added advantage of lead free\* materials. Designed to provide long service life and ease of in-line maintenance. SAE grade body bolts are standard. These valves are cast and machined in Apollo's South Carolina manufacturing plants.

## features

- ASTM B584 bronze body and ends
- lead free\* brass materials
- sae grade 8 body bolts
- adjustable packing nut
- full port flow
- 300 CWP
- 2-1/4" CS stem extension
- easily identifiable white handle grip and blue "lead free" hang tag
- Leak Before Press® Technology
- Ridgid® XL Press Tool compatible
- 100% factory tested
- made in USA – ARRA Compliant

## performance rating†

- maximum operating pressure: 300 psi
- temperature range: 0°F - 250°F
- vacuum service to 29 in. Hg

†APOLLOPRESS® connectors are designed for direct mechanical connection to ASTM B88-Type K, L, and M copper tubing in the hard drawn condition. Press connectors are not suitable for steam or flammable gas service. Not compatible with soft annealed copper tubing.

## approvals

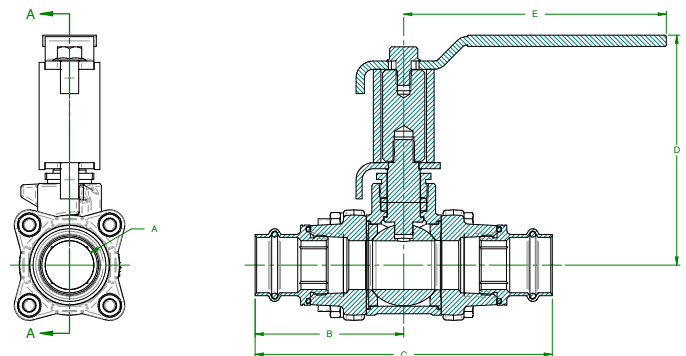
- MSS SP-110 ball valves
- CSA B51 CRN: 0C10908.5C
- NSF/ANSI/CAN 61 - water quality
- NSF/ANSI 372 - lead free

## standard materials list

lever and grip	steel, zinc plated w/ vinyl
stem packing	MPTFE
stem bearing	RPTFE
ball	C27451 lead free* DZR brass, chrome plated
seat (2)	RPTFE
end cap (2)	C89836 lead free* bronze
press connectors	DZR brass
stem	C27451 lead free* DZR brass
lever nut	steel, zinc plated
body bolt	steel, zinc plated
hex nut	steel, zinc plated
body	ASTM B584-C89836 lead free bronze
o-rings	EPDM

## dimensions

model number	size (in.)	dimensions (in.)				
		A	B	C	D	E
82LF-103-04-PR	1/2"	0.50	2.32	4.66	4.03	4.75
82LF-104-04-PR	3/4"	0.75	2.79	5.58	4.28	4.75
82LF-105-04-PR	1"	1.00	3.06	6.11	4.73	5.37
82LF-106-04-PR	1-1/4"	1.25	3.62	7.24	4.92	5.37
82LF-107-04-PR	1-1/2"	1.50	4.24	8.48	5.48	7.75
82LF-108-04-PR	2"	2.00	4.82	9.66	5.79	7.75



\*lead free: The wetted surfaces of this product shall contain no more than 0.25% lead by weighted average. Complies with Federal Public Law 111-380. ANSI 3rd party approved and listed.