

84B-140

carbon steel 3-piece standard port class 600 NPT ball valve



standard compliance

- valve design: ASME B16.34 class 600, NACE MR0175 (2000) & MR0103 (2012), API 608
- end connections: NPT per ASME B1.20.1

- valve marking: MSS SP-25
- production testing: ASME B16.34

features

- 3-piece construction with enclosed fasteners
- T-to-position locking
- standard port
- adjustable multi-piece PTFE "V" style packing
- stainless steel trim & hardware
- fully machined ISO 5211 mounting
- cast bosses on the center-section and end caps for bleed & drain ports
- fire safe to API 607 (requires -24 suffix)
- swing-out center section

- pressure balanced solid ball
- compression controlled spiral wound gaskets
- vacuum service to 29 in of Hg.
- anti-blowout one piece bottom entry stem
- CE marking, 1.00" and larger (add "-CE" suffix)
- statically grounded ball, stem, & body
- 250 psig saturated steam
- CGA 3.16-M88 (2014)

standard material list

	part	material
1	body	ASTM A216-WCB
2	end caps	ASTM A216-WCB
3	ball	ASTM A276-316SS
4	stem	ASTM A276-316SS ASTM A564 17-4PH (2" with -38 suffix)
5	seat	multi-seal
6	packing	PTFE
7	stem bearing	PEEK/PTFE
8	body gasket	PTFE spiral wound
9	body bolts	ASTM A193-Gr. B8M3
10	stop bolts	18-8 stainless steel
11	gland bolts	ASTM A193-Gr. B8
12	handle nut/screw	300 series stainless steel
13	packing gland	ASTM A276-316SS
14	gland plate	300 series stainless steel
15	lever handle	300 series stainless steel
16	lock plate	300 series stainless steel
17	stops	300 series stainless steel
18	internal grounding spring	300 series stainless steel
19	external grounding spring	300 series stainless steel

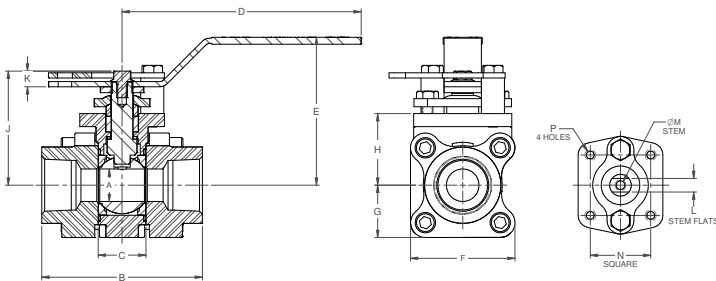
options available

(more information in section J)

note: all options and materials listed are not available for all valves and sizes listed. pricing may be subjected to minimum requirements and material availability.

- Minimum quantities apply
- To specify an option, replace the "01" standard suffix with the suffix of the option.
- To specify multiple options, replace the "01" suffix with the desired suffixes in the numerical order shown below. NOTE: Not all suffixes can be combined together.

(suffix)	option	sizes
-01	standard configuration	All
-P-01-	BSPP (parallel) thread connection	3/4" to 2-1/2"
-T-01-	BSPT (tapered) thread connection	3/4" to 2-1/2"
-04-	2.25" stem extension (carbon steel, zinc plated)	3/4" to 2-1/2"
-14-	vented ball	3/4" to 2-1/2"
-15-	round handle	3/4" to 2-1/2"
-21-	UHMWPE seats with graphite seals	3/4" to 2-1/2"
-24-	graphite packing, spiral wound graphite body seal, PTFE/PEEK bearing (fire safe API 607 5th edition, ISO 10497-5:2004)	3/4" to 2-1/2"
-26-	chlorine service. vented. special cleaning assembled dry. (for CS, HC, & Monel only)	3/4" to 2-1/2"
-38-	PEEK seats, graphite stem packing & gaskets	3/4" to 2-1/2"
-49-	no lubrication. assembled dry	3/4" to 2-1/2"
-62-	center section only	3/4" to 2-1/2"
-63-	npt x socketweld	3/4" to 2-1/2"
-67-	cleaned for industrial gases	3/4" to 2-1/2"
-69-	drilled & tapped purge & drains	3/4" to 2-1/2"
-70-	4" extended bonnet	3/4" to 2-1/2"
-76-	live loaded (lever operated)	3/4" to 2-1/2"
-77-	live loaded (actuated)	3/4" to 2-1/2"
-90-	double packed 4" extended bonnet	3/4" to 2-1/2"
-9P-	double packed 4" extended bonnet with monitoring port	3/4" to 2-1/2"
-CE-	CE marking	1-1/2" to 2-1/2"
-EP-	garlock EVSP Stem Packing with Spiral Wound Graphite Gasket (Fire Safe by Design)	3/4" to 2-1/2"
-KF-	PCTFE stem bearing	3/4" to 2-1/2"
-SR-	spring return handle	3/4" to 1"
-UL-	ul listed	3/4" to 2-1/2"



dimensions

product no.	size	A	B	C	D	E	F	G	H	J	K	L	M	N	P	WT.
84B-144-01	3/4"	0.50	2.80	0.89	5.12	3.03	2.02	1.01	1.39	1.98	0.24	0.245	0.375	1.00	10-24	2.3
84B-145-01	1"	0.75	3.70	1.10	5.51	3.41	2.40	1.20	1.65	2.37	0.24	0.312	0.500	1.392	1/4-20	4.2
84B-147-01	1.5"	1.25	4.58	1.73	6.67	4.61	3.52	1.76	2.38	3.78	0.72	0.412	0.625	1.949	5/16-18	11.5
84B-148-01	2"	1.50	4.98	1.97	6.67	4.76	3.84	1.92	2.49	3.89	0.69	0.412	0.625	1.949	5/16-18	14.6
84B-149-01	2.5"	2.00	5.86	2.56	8.40	5.52	4.56	2.33	3.17	4.74	0.77	0.477	0.750	1.949	5/16-18	24.4

pressure/temperature ratings - page M-20, graph no. 25

REV.03AUG22