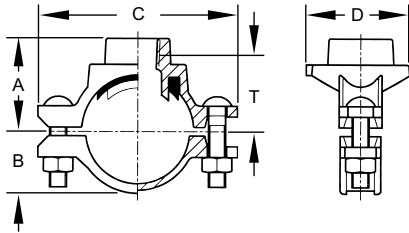




Job Name:	
Job Location:	
Engineer:	
Contractor:	
Tag:	
PO#:	
Rep:	
Wholesale Dist.:	



The Shurjoint Model SS-723 stainless steel mechanical tee is the ideal fitting for branch or direct outlet connections to sprinkler heads, drop nipples and or gauges on stainless steel pipe. No need for welding, simply cut or drill a hole at the desired location, position the housing so that the locating collar fits within the hole and secure with the bolts and nuts. The SS-723 is comprised of stainless steel investment cast housings, EPDM gasket and stainless steel track bolts and nuts. The SS-723 is available in grades CF8 (304) and CF8M (316). Additional sizes and or grades are available on request, please contact for Shurjoint for details.

For Fire Protection pressure rating, listing, and approval information, refer to Data Sheet B-42 or visit www.shurjoint.com for details or contact Shurjoint.

DIMENSIONS

NOMINAL SIZE RUN X BRANCH	MAX. WORKING PRESSURE (CWP)*	HOLE DIA. † +0.063, -0 / +1.6, -0	DIMENSIONS					BOLT SIZE	WEIGHT
			A	B	C	D	T†		
in	PSI	in	in	in	in	in	in	in	lb
mm	Bar	mm	mm	mm	mm	mm	mm	mm	kg
1-1/4 x 1/2	300	1.18	1.60	1.02	3.44	1.93	1.06	5/16 x 1-1/2	0.7
32 x 15	20	30	41	26	87	49	27		0.3
1-1/4 x 3/4	300	1.18	1.70	1.02	3.44	1.93	1.14	5/16 x 1-1/2	0.7
32 x 20	20	30	44	26	87	49	29		0.3
1-1/4 x 1	300	1.18	2.00	1.02	3.44	1.93	1.34	5/16 x 1-1/2	0.9
32 x 25	20	30	51	26	87	49	34		0.4
1-1/2 x 1/2	300	1.18	1.70	1.13	3.54	1.93	1.18	5/16 x 1-1/2	0.7
40 x 15	20	30	44	29	90	49	30		0.3
1-1/2 x 3/4	300	1.18	1.81	1.13	3.54	1.93	1.22	5/16 x 1-1/2	0.7
40 x 20	20	30	46	29	90	49	31		0.3
1-1/2 x 1	300	1.18	2.09	1.13	3.54	1.93	1.42	5/16 x 1-1/2	0.9
40 x 25	20	30	53	29	90	49	36		0.4
2 x 1/2	300	1.18	2.00	1.42	4.28	2.00	1.46	5/16 x 1-1/2	1.1
50 x 15	20	30	51	36	109	51	37		0.5
2 x 3/4	300	1.18	2.09	1.42	4.28	2.00	1.10	5/16 x 1-1/2	1.1
50 x 20	20	30	53	36	109	51	28		0.5
2 x 1	300	1.18	2.37	1.42	4.28	2.00	1.69	5/16 x 1-1/2	1.4
50 x 25	20	30	60	36	109	51	43		0.6

*Working pressure is based on standard wall stainless steel pipe.

† Hole diameters listed are suggested hole diameters.

††: Take-out (Center of run to end of pipe to be engaged)

MATERIAL SPECIFICATIONS

HOUSING:

- Type 304 Stainless steel to ASTM A351 CF8 or A743 Gr. CF8
- Type 316 to ASTM A743 CF8M
- Type 316L to ASTM A743 CF3M
- Type 316Ti to ASTM A240
- Duplex 2205 to ASTM A890 4A
- Super Duplex 2507 to ASTM A890 5A
- Duplex 254SMO to ASTM A351 CK3McuN

RUBBER GASKET:

Grade "E" EPDM (Color code: Green stripe)

- Good for cold & hot water up to +230°F (+110°C). Also good for services for water with acid, water with chlorine, deionized water, seawater and waste water, dilute acids, oil-free air and many chemicals.
- **Not recommended for petroleum oils, minerals oils, solvents and aromatic hydrocarbons.**
- Maximum Temperature Range: -30°F (-34°C) to +230°F (+110°C).
*EPDM gaskets for water services are not recommended for steam services unless couplings or components are accessible for frequent gasket replacement.

(Option) Grade "T" Nitrile (Color code: Orange stripe)

- Recommended for petroleum products, air with oil vapors, vegetable and mineral oils within the specified temperature range. Also good for water services under +150°F (+66°C)
- Hot dip zinc galvanized (Optional). Temperature range: -20°F to +180°F (-29°C to +82°C)
- **Do not use for HOT WATER above +150°F (+66°C) or HOT DRY AIR above +140°F (+60°C).**

OTHER OPTIONS

Grade "O" - Fluoroelastomer

Grade "L" - Silicone

- For additional details contact Shurjoint.

BOLTS & NUTS:

- Type 304 Stainless steel track bolts to A193 B-8 with heavy duty nuts to ASTM A194 B8, Molybdenum disulfide (MoS₂) coated.
- Type 316 Stainless steel track bolts to A193 B-8M with heavy duty nuts to ASTM B8M, Molybdenum disulfide (MoS₂) coated.

GENERAL NOTES

- Maximum Working Pressure (CWP) listed is the maximum cold water pressure for general piping services tested to ASTM F1476 and or AWWA C606 methods. Figures listed are based on roll- or cut-grooved standard wall carbon steel pipe. For other pipe schedules or pipe materials, contact Shurjoint for additional information.
- Max. End Load is calculated based on the maximum working pressure (CWP).
- Listed and or Approved Pressures are pressure ratings for fire protection systems, tested and approved by various approval bodies. Please always refer to the latest approval data posted on the Shurjoint website.
- Field Joint Test: For one time only the system may be tested hydrostatically at 1.5 times the maximum working pressure listed (AWWA C606 5.2.3).
- Warning: Piping systems must always be depressurized and drained before attempting disassembly and or removal of any components.
- The 10 Year Limited Warranty applies to manufacturing defects only and does not cover severe service/temperature applications or wear parts.
- Shurjoint reserves the right to change specifications, designs and or standard without notice and without incurring any obligations.