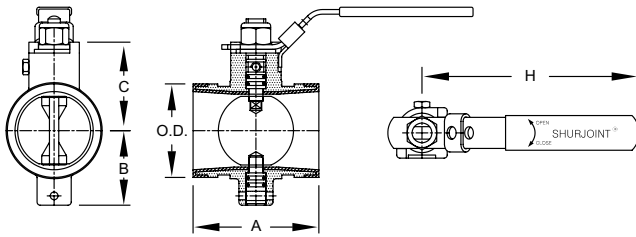




Job Name:	
Job Location:	
Engineer:	
Contractor:	
Tag:	
PO#:	
Rep:	
Wholesale Dist:	



The Shurjoint Model SJ-200 Butterfly Valve is a low profile, grooved-end butterfly valve for oil & gas and or mining services. Working pressure is rated up to 232 psi / 1600 kPa and service temperatures up to +180°F/+82°C (Nitrile body liner). The Model SJ-200 features a fully rubber lined body with 316 stainless steel disc. The end-to-end dimensions conform to MSS SP-67. The lever handle is equipped with a tamper resistant locking device.

DIMENSIONS

NOMINAL SIZE	PIPE O.D.	MAX. WORKING PRESSURE (CWP)*	DIMENSIONS				WEIGHT
			A	B	C	H	
in	in	PSI	in	in	in	in	lb
mm	mm	Bar	mm	mm	mm	mm	kg
2	2.375	232	3.19	1.89	2.25	5.51	2.0
50	60.3	16	81	48	57	140	0.9
2-1/2	2.875	232	3.82	2.13	2.65	7.48	3.3
65	73.0	16	97	54	67	190	1.5
3	3.500	232	3.82	2.44	2.94	7.48	4.2
80	88.9	16	97	62	75	190	1.9
4	4.500	232	4.57	3.00	3.82	10.79	8.6
100	114.3	16	116	76	97	274	3.9
6	6.625	232	5.83	4.09	4.57	10.79	22.2
150	168.3	16	148	104	116	274	10.1
8	8.625	232	5.25	5.50	6.00	10.79	27.9
200	219.1	16	133	140	152	274	11.3

*Working pressure is based on connection with roll- or cut-grooved standard wall carbon steel pipe.

MATERIAL SPECIFICATIONS

VALVE BODY:

- Ductile Iron to ASTM A536, Gr. 65-45-12 and or to ASTM A395, Gr. 65-15-45, min tensile strength 65,000 psi (448 MPa)

DISC:

- Stainless Steel CF8M (316)

VALVE BODY COATING:

- Exterior epoxy paint, black

UPPER & LOWER SHAFTS:

- Stainless steel Type 416

O-RING:

- NBR

NUT:

- Carbon steel nylon lock nut, zinc electro plated

LEVER HANDLE:

- Carbon steel, zinc electro plated with plastic grip

VALVE BODY LINER:

(Option) Grade "T" Nitrile (Color code: Orange stripe)

- Recommended for petroleum products, air with oil vapors, vegetable and mineral oils within the specified temperature range. Also good for water services under +150°F (+66°C)
- Temperature range: -20°F to +180°F (-29°C to +82°C)
- **Do not use for HOT WATER above +150°F (+66°C) or HOT DRY AIR above +140°F (+60°C)**

GENERAL NOTES

- Maximum Working Pressure (CWP) listed is the maximum cold water pressure for general piping services tested to MSS SP-67 methods. Figures listed are based on roll- or cut-grooved standard wall carbon steel pipe. For other pipe schedules or pipe materials, contact Shurjoint for additional information.
- Field Joint Test: For one time only the system may be tested hydrostatically at 1.5 times the maximum working pressure listed (AWWA C606 5.2.3).
- Warning: Piping systems must always be depressurized and drained before attempting disassembly and or removal of any components.
- Products manufactured by Shurjoint are warranted solely to the original Buyer for eighteen months (18) months from date of shipment or one (1) year from date of installation, whichever is sooner.
- Warranty applies to manufacturing defects only and does not cover severe service/temperature applications or wear parts.
- Shurjoint reserves the right to change specifications, designs and or standard without notice and without incurring any obligations.